

# Technical data sheet

All right reserved Landa illuminotecnica S.p.A.  
will reserve to change the specific note without  
any written notice.

**LANDA**<sup>®</sup>  
illuminotecnica

## Polos

Article 4033.00L10H
Product type Wall Light
Body material: Die-casting aluminium EN47100 LCU, prior the painting process, washed with stones. Painting made by polyester powder with high resistant against oxidation.
Transparent polycarbonate UV protection and silicon gasket
Reflector in steel white painted
Screws in A2 stainless steel

IK07  
IP64  
850°C  
Powered by  
Citizen Electronics CLL130

Transformer  
Lightech IP67 Included 220/240V

10W 1100LM 3000°K Ra80



++ ÷



Colours available:

Graphite



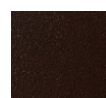
nhg

Metalgrey



all

Oxide



oxi

